



GAT MONTHLY MEMBERSHIP PROGRESS REPORT

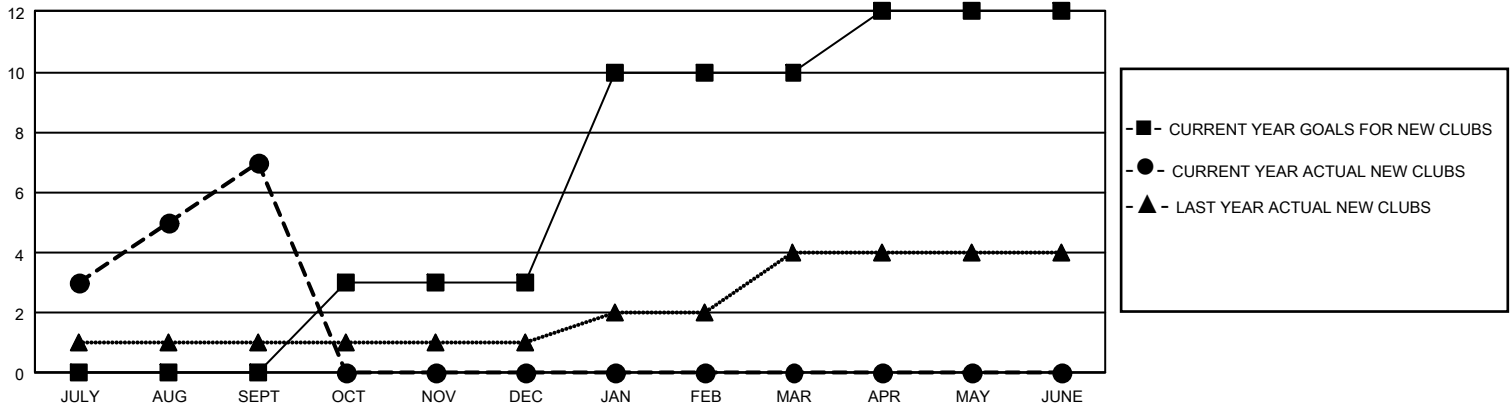
Results as of: 9/30/2025

GMT Constitutional Area 5 - J, Group H

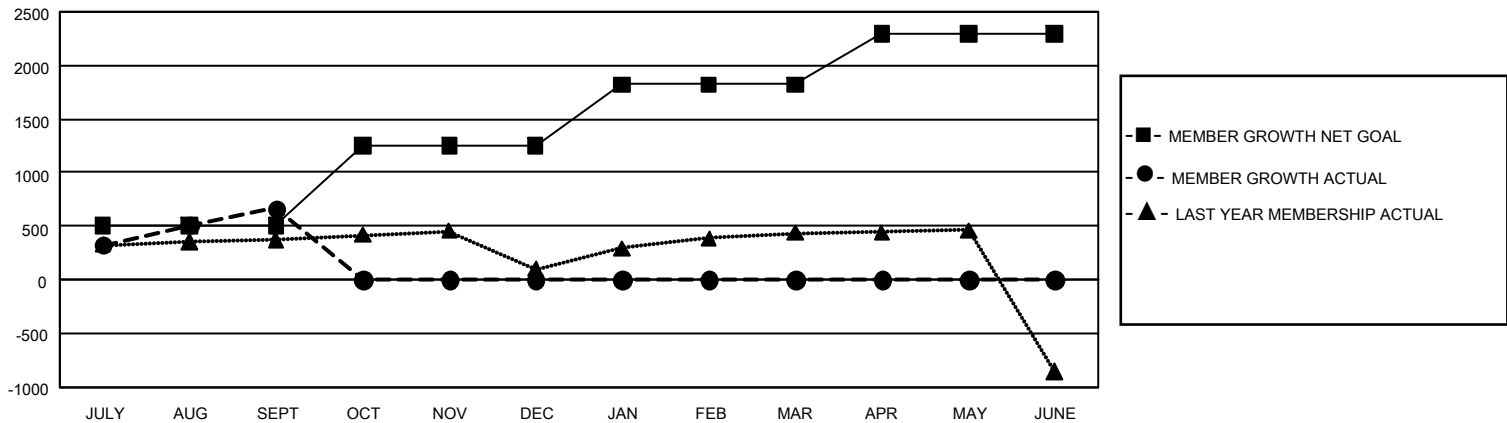
REPORT DOES NOT INCLUDE CLUBS IN UNDISTRICTED AREAS.

Clubs				Members			
RESULTS FOR 2025-2026				RESULTS FOR 2025-2026			
QUARTER	NEW CLUB GOAL	NEW CLUBS	DROPPED CLUBS	QUARTER	MEMBER GROWTH NET GOAL	MEMBER GROWTH ACTUAL	DROPPED MEMBERS ACTUAL (including transfers)
JULY/AUG/SEPT	0	7	0	JULY/AUG/SEPT	507	1,180	443
OCT/NOV/DEC	9	0	0	OCT/NOV/DEC	745	0	0
JAN/FEB/MAR	21	0	0	JAN/FEB/MAR	570	0	0
APR/MAY/JUNE	6	0	0	APR/MAY/JUNE	473	0	0

GOALS AND ACTUAL NEW CLUBS CUMULATIVE



GOALS AND ACTUAL MEMBERS CUMULATIVE



DROPPED CLUBS: 0

367 CLUBS OF 725 ADDED 1 OR MORE NEW MEMBERS

GENDER DISTRIBUTION

MALE	22,662 (75.97%)
FEMALE	7,161 (24.00%)
NON BINARY	0 (0.00%)
PREFER NOT TO ANSWER	9 (0.03%)

DROPPED MEMBERS

DECEASED	49
CLUB CANCELLED	0
OTHER	392
TOTAL	441

[CLICK HERE FOR CUMULATIVE MEMBERSHIP DATA](#)

TOTAL FAMILY UNIT MEMBERS 9,539

FAMILY MEMBERS PAYING HALF DUES 5,252